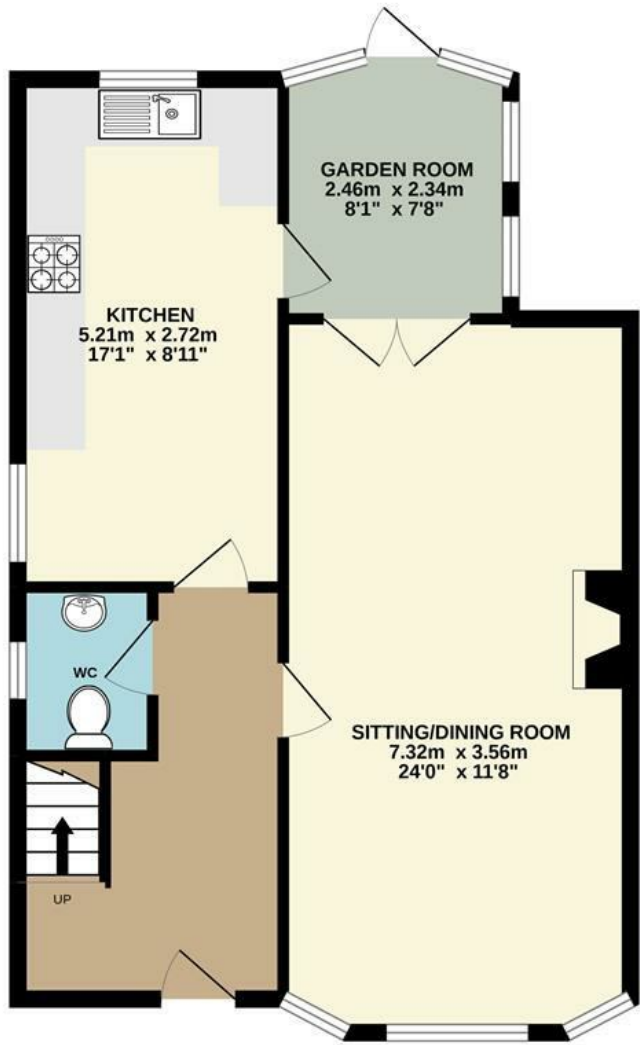
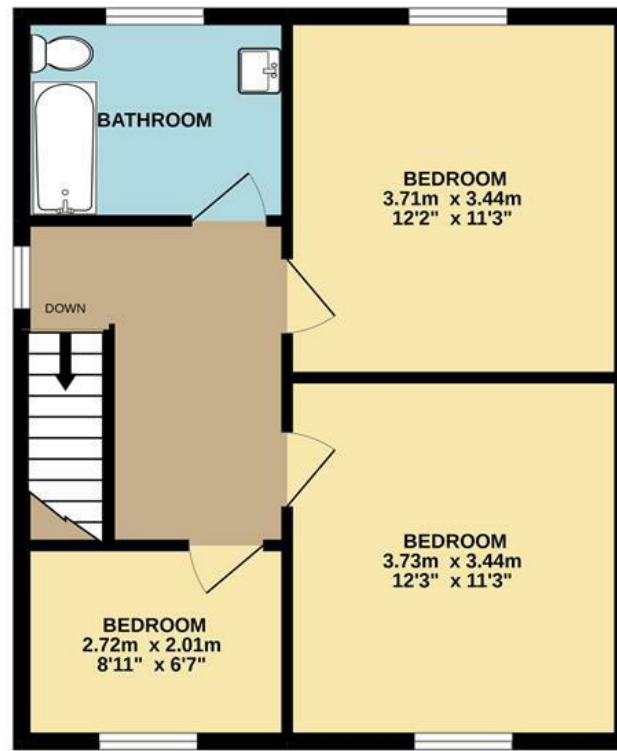


GROUND FLOOR  
57.1 sq.m. (614 sq.ft.) approx.



1ST FLOOR  
45.9 sq.m. (494 sq.ft.) approx.



Energy Efficiency Rating		Current	Potential
Very energy efficient - lower running costs			
(92 plus)	A		
(81-91)	B		
(69-80)	C		
(55-68)	D		
(39-54)	E		
(21-38)	F		
(1-20)	G		
Not energy efficient - higher running costs			
<b>England &amp; Wales</b>		EU Directive 2002/91/EC	

Disclaimer – In accordance with the Property Misdescriptions Act, the company gives notice that all descriptions, references to condition, necessary permissions for use and other details are given in good faith and believed to be correct, but any intending lessees do not rely on them as statements of fact, but must satisfy themselves by inspection or other means, as to their accuracy.

TOTAL FLOOR AREA : 102.9 sq.m. (1108 sq.ft.) approx.

Whilst every attempt has been made to ensure the accuracy of the floorplan contained here, measurements of doors, windows, rooms and any other items are approximate and no responsibility is taken for any error, omission or mis-statement. This plan is for illustrative purposes only and should be used as such by any prospective purchaser. The services, systems and appliances shown have not been tested and no guarantee as to their operability or efficiency can be given.  
Made with Metropix ©2022.



Bush Road | Norwich | NR6  
Guide Price £300,000



abbotFox presents this stylish family home. Situated within the popular residential area of Hellesdon, that affords easy access to a wide variety of local amenities, this mature semi-detached house is an ideal opportunity for any growing family.

Accommodation comprises; entrance hall, cloakroom, kitchen breakfast room, lounge diner and conservatory to the ground floor, the first floor offers three bedrooms and a family bathroom. Externally, the spacious driveway to the front offers ample off road parking, with electric charging point, whilst the generous rear garden offers a high degree of privacy.

An internal viewing comes highly recommended.

